

## Instruction Sheet

Follow these instructions to install  
a Front Washdown kit in RE80 fryers.

**Subject: 8263808 RE80 Front Washdown Kit  
Instructions**

**Models affected: FPRE80 Fryers**

1. Disconnect power from the electrical power supply.
2. Remove the fryer from the hood to gain access to the rear of the fryer.
3. Remove filter pan.
4. Remove filter pan lid.
5. Remove the upper back from the fryer to access return valve switches.
6. Ensure all front wand assembly hoses and fittings are tight before inserting assembly into the fryer.
7. Remove the three (3) nuts attaching the bottom plate to the 1089222-plumbing assembly (see Figure 1).
8. From the rear of the fryer locate the two (2) holes on the far-left lower inner rear cabinet base channel (see Figure 2).

In This Kit		
Part #	Description	Qty
1089222	PLUMBING, FRONT DISPOSE 2FQ80E	1
130000389	BRACKET ASSY, FRONT DISPOSE FQ	1
8090412	SCREW, #10-1/2 HX WSHR HD NP	4
8090417	NUT, FLANGE SERR 1/4-20	4
8090237	NUT, 4-40 KEPS	4
8090132	SCRW, 1/4-20X3/4 PN SL HD SS	4
1085386	HOSE ASSY, 1814 POPEYES 10FT WS	1
8101069	FLEX- 5/8 X 29 1/2	1
8101668	ADAPTER, MALE 5/8 O.D. X 1/2 NPT	1
8198046	INSTRUCTIONS RE80 FRONT WAND KIT	1
8158000	LOCTITE 567 TUBE 6ML	1
1089575	HARNESS ASSY, OIL RTN JUMPER FPRE80	1



Figure 1



Figure 2

9. Attach the plate removed in step 7 with cabinet screws, to the two (2) holes as shown in Figure 2. Ensure the two (2) studs are located on the bottom of the plate (see Figure 3).
10. Reattach the plumbing assembly removed from the plate in step 7, to the plate mounted in the previous step, using the three (3) nuts removed in step 7 (see Figure 4).

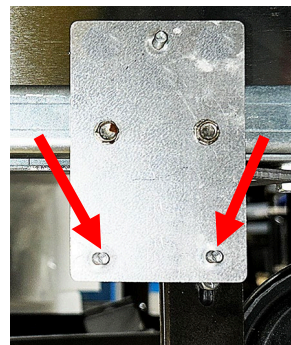


Figure 3

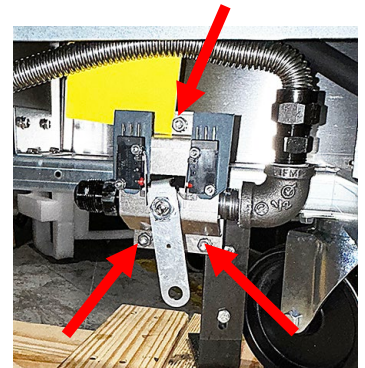


Figure 4

11. Position the bracket and flexline towards the front of the fryer (see Figure 5).
12. Attach the bracket with the quick disconnect, to the front of the fryer (see Figure 6) using flat head screws. Secure the screws with the three (3) ¼"-20 nuts. The photo shows hex bolts on the front. However, use the screws instead for door clearance.

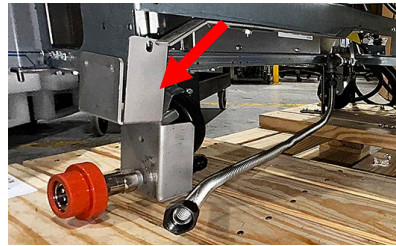


Figure 5

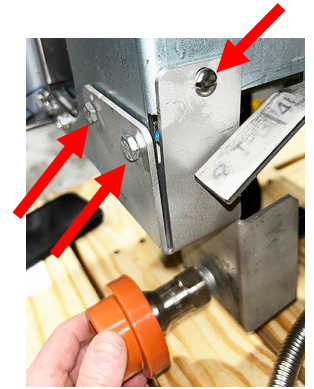


Figure 6

13. Attach the other flex line to the bottom of the plumbing assembly (see Figure 7).
14. Remove the left plug from the oil return manifold using a 3/8" drive wrench (see Figure 8).
15. Attach the 8101668 adaptor to the open port in the oil manifold, from the previous step, using Loctite® (see Figure 9).

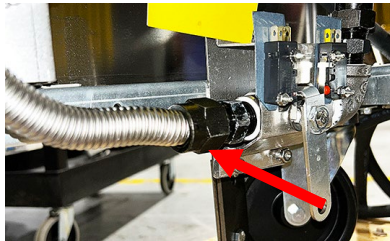


Figure 7



Figure 8

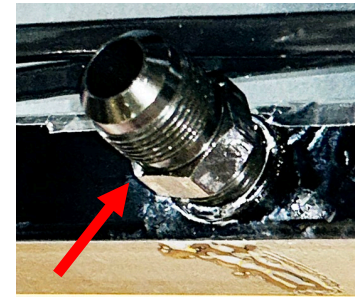


Figure 9

16. Attach the flexline installed in step 13, from the washdown assembly to the adaptor fitting in the previous step (see Figure 10).
17. Insert the handle, with the blue cap, into the quick disconnect bracket above the quick disconnect port (see Figure 11).

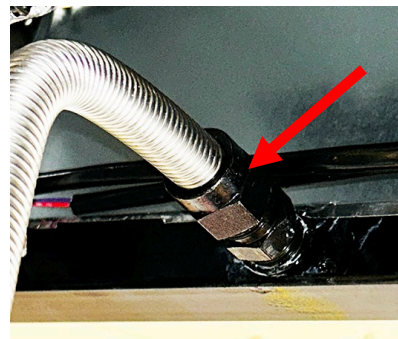


Figure 10

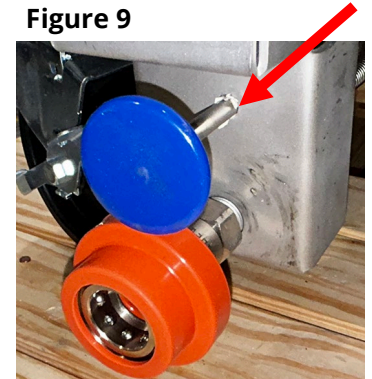


Figure 11

18. Place the clevis hook over the front washdown valve handle. Insert the handle assembly rod through the clevis clip, through the handle into the assembly. Rotate the clip over the rod and snap into place as shown (see Figure 12).

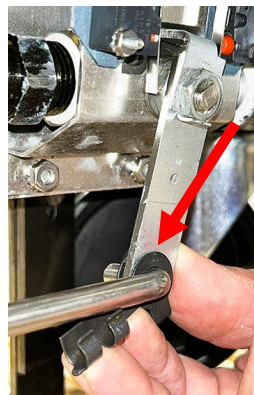


Figure 12

19. Pull the handle completely forward away from the fryer and push back towards the fryer. Ensure the handle moves freely.

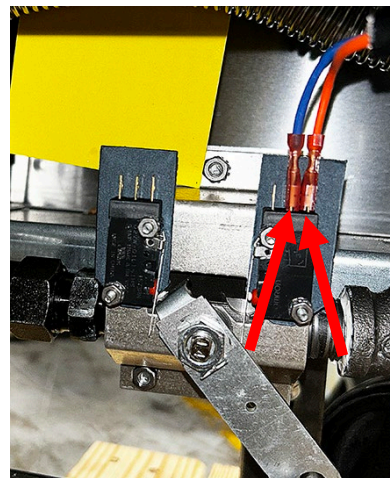


Figure 13

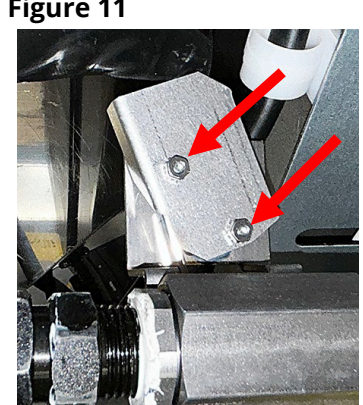


Figure 14

20. Attach the orange and blue wires from one end of the harness to the rear switch on the dispose assembly. Ensure the wires are attached to the two rear terminals on the switch as shown (see Figure 13).
21. Remove the two (2) nuts attaching the return switch cover under the **SECOND (2<sup>nd</sup>) vat**. The switch is located under the rear side of the vat attached to the return valve (see Figure 14).

22. Disconnect the existing harnesses attached to the switch (see Figures 15 & 16). **DO NOT REMOVE** the unused insulated connector from the switch.
23. Remove the blue and orange wires from the switch. Attach the pigtail from the new harness from the dispose assembly to pigtail on the old harnesses (blue wires to blue wires and orange wires to orange wires) (see Figure 17).
24. Reattach the pigtails to the two (2) terminals on the switch (see Figure 18).
25. Reattach the switch cover removed in step 21.
26. Attach the flex line from the top of the plumbing assembly to the rear of the quick disconnect (see Figure 19).
27. Test the front wand wash down kit by connecting the fryer to power. Pull on the front wand washdown handle to ensure the switch activates the pump motor.
28. Reverse steps 2-5 to reassemble and return to operation.



Figure 15

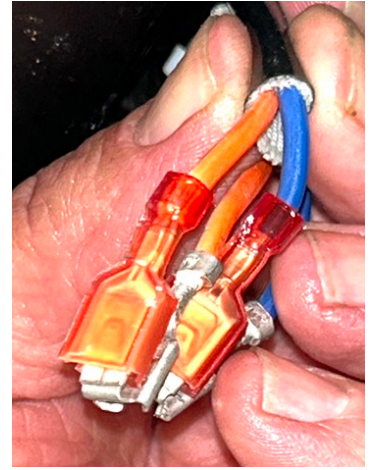


Figure 16

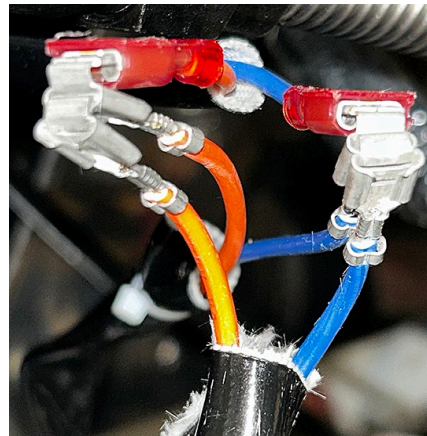


Figure 17

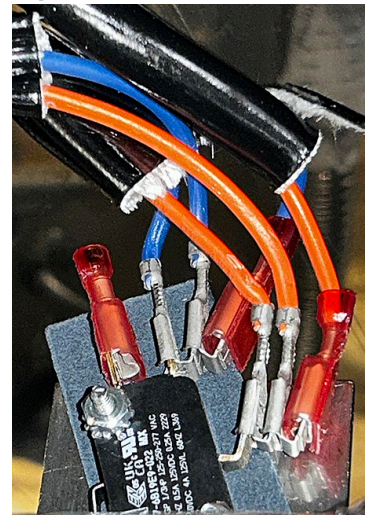


Figure 18



Figure 19